

More Nostalgia!



K & B DRUGS!
Store #3 built in 1920

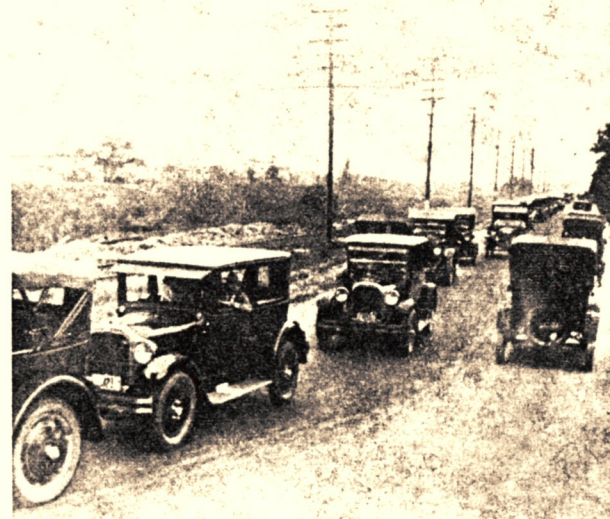


St. Charles & Louisiana Ave.

✦ Legends ~ Lifestyles ~ Landmarks ✦



MOTHER'S RESTAURANT (1965)
Poydras & Tchoupotoulas.



TRAFFIC JAM!
Robert E. Lee near Canal Blvd

Opening
on Baronne Street
with the Smart...
the New...in



**SPRING
DRESSES**

Many Telling Little Tricks
That Make Them
Distinctly Spring,
1933

\$4.95

- Satin Prints
- Camel Hides
- Rough Crepes
- New Prints

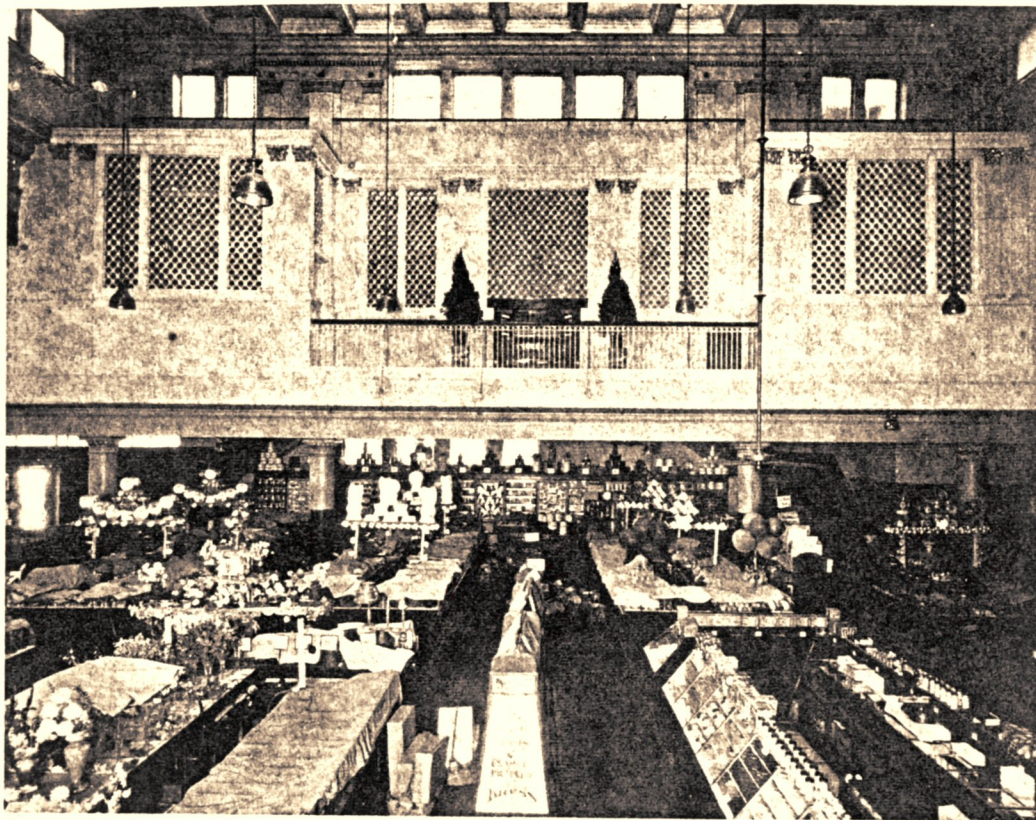
We are delighted to serve the community in fashion for a time when it is more than ever needed for... These regulations are all a function of their own... have our business done with each individual of credit... at \$20

Every New Trend the Latest FROCKS For the Fairer Half of Mankind	7.95 9.95
Fashion Highlights in Spring Successes	14.95

Souvenirs for All Visitors
Tuesday
Faliche & Graff
BARONNE STREET
Open Tuesday Till 9 P. M.



Class of 1938 - 1948



"...off to Pineville it went!" (1947)

....KRESS 1928!

What more can
I say...!



Hermann Deutsch

'20s Organ Recitals
In Canal St. Store

HOLD ON, PLEASE! Before you reach for quill or lead to write that indignant letter, hear me out. I know perfectly well that in Wednesday's column I rang down the curtain on that wretched effort to track down the right name and the proper locus of those organ recitals in a Canal st. store during the latter '20s and early '30s. But when a 70-year-old grandmere takes the trouble to inform you about, among other things, the death of her only two brothers within four days of one another, I'm not about to hesitate to re-raise on Friday the curtain I rang down on Wednesday.

If you want to say that is tantamount to breaking my word, I am ready to reply: "So what else is new?" and go on placidly about my business. Any who might care for pieces of my broken word are more than welcome to pick them up.

The lady who telephoned me the other evening is the former Elsa Rive, one of the three daughters of the original Adolph Rive Sr.

and his wife, Adeline Schrenk Rive. Their three daughters were Flora, Elsa and Jennie; their two sons were Adolph Jr. and Emile.

Adolph Jr. married Margaret Williams, and they had two children—David C. and Virginia Rive. David married Sheila Joyce and they have three children—David, William and Margaret; Virginia married John Elwyn Worrell, and they have four children—Virginia (Ginger), John Jr., Suzanne and Elizabeth, the last two being 1 and 2 years old, respectively. David Rive and John Elwood Worrell are the partners who presently head up the Rive Pipe Organ Co. Inc. at 861 Camp st.

By the way, the name Rive is pronounced "Reevay," in the French fashion.

★ ★ ★
NOW FOR A DETAILED HISTORICAL synopsis: the Aeolian pipe organ installed on a specially built mezzanine of the Kress Canal st. "five and dime" store early this century was purchased from, and installed by, the original Adolph Rive Sr. and his son, Adolph Jr. It was played every week day by Ed Larmann, who was also organist for St. Stephen's Church, according to Ray McNamara. The assistants who helped the two Adolphins, pere-et-fils, to install the organ were mostly Loyola students.

Circa 1915 the two Adolphins installed a gorgeous pipe



HERMANN DEUTSCH

organ in the late Samuel Zemurray's home at Newcomb bldv. and St. Charles. Two players, in different parts of the house, were each able to produce organ music from paper rolls like those which activate a "pianola."

But when the Kress establishment decided to forgo the organ recitals, they were not "daily," as public interest in them flagged; the organ stood unused for weeks on end. Mr. Kress finally decided the space could be more practically employed by counters for the direct sale of goods. The organ he donated to Louisiana College in Pineville, across the Red River from Alexandria, heart of Central Louisiana.

I can't swear to this next statement, because my notes on it are written in longhand. While I usually read my stenographic notes without undue difficulty, my handwriting is sheer blue murder. But as nearly as I can make out my scribbles, the organ had been set up at Kress by the two Adolphins, Sr. and Jr.; it was set up at Louisiana College somewhere very close to the near or far side of 1949 by Adolph Jr. and his son, David C., grandson of the founder.

★ ★ ★
WITH THE FOUNDER PASSED ON to join his ancestors, the business continued to flourish, just as it is doing well today, despite such rivals for public favor as the teevy, the wide screen and drive-in, a pops summer season providing music under the stars, and the automobile-cum-good roads opening the entire continent to easy personal and family travel. But in 1959, both the second-generation brothers had virtually retired. Emile was a cancer patient, Adolph had a critical heart condition.

Emile was the first to succumb, losing a hopeless battle against cancer. Adolph, his only brother, died four days later of what the attending physicians described as a massive heart attack, which took his life within two hours of its onslaught. He was dead by the time the ambulance brought what was mortal of him to the hospital. The surviving sister, Elsa, now 70 years old, agrees that Adolph was laid low by a heart attack—which to this day she designates as "a broken heart."

David, grandson of the first Adolph Rive, and John Elwyn Worrell, his brother-in-law, are the directing heads of the business the first Adolph founded, operating it as a partnership. There is a continuing demand for pipe organs in new churches, in new hotel grand ballrooms, in convention headquarters and the like. As long as that demand exists, there will be in New Orleans a close-knit family of the first Adolph Rive's descendants to satisfy it.



ORGAN NUMBER

1678

THE AEOLIAN COMPANY

NEW YORK

AEOLIAN PIPE-ORGAN

FOR

In the Store of

S. H. Kress and Company,

New Orleans, La.



Encl. 3/27/28. L.H.R.
Copy to L.H.R. 3/29/28.

The Aeolian Company

PIPE-ORGAN DEPARTMENT

Aeolian Hall New York

Frank Taft Managing Director

Builders of

Aeolian Pipe-Organs

for

Residences

LONDON PARIS

WORKS AEOLIAN NEW JERSEY

March 15th, 1928.

Specification for an Aeolian Pipe-Organ prepared for

S. H. KRESS & CO.

New Orleans, La.

AEOLIAN SYMPHONIC ORGAN

Three Manuals and Pedals. Compass of Manuals - C₂ to C₄ - 61 Keys. Compass of Pedals - C₂ to G - 32 Keys.

Playable from the Keyboards, with Aeolian Duo-Art (automatic) Records (including full Pedal Compass), and Aeolian Solo (116-note) Music Rolls, (over 2000 selections available).

GREAT ORGAN

1. Diapason 8' 73 Pipes
2. Gross Flute 8' 73 Pipes
3. Concert Flute) 8' 73 Notes
4. Flute) - 85 Pipes 4' 73 Notes
5. Piccolo) 2' 61 Notes
6. Gemshorn 8' 73 Pipes
7. Clarinet 8' 73 Pipes
8. Tuba (High Pressure) ... 8' 73 Pipes
9. Harp, Aeolian Concert .. 8' 61 Tones
10. Celesta 4' 61 Tones
(playable on all Manuals, and with damper control)
11. Chimes, Tubular 20 Bells
(playable on all Manuals and Pedals. With F & P Control)
12. Tremolo

SWELL ORGAN

13. Diapason 8' 73 Pipes
14. Bourdon) 16' 73 Notes

729

SWELL ORGAN (continued)

15.	Flute Espanol) -97 Pipes	8'	73 Notes
16.	Flute)	4'	73 Notes
17.	Flageolet)	2'	61 Notes
18.	Viole d'Orchestre	8'	73 Pipes
19.	Viole Vibrato	8'	73 Pipes
20.	Salicional	8'	73 Pipes
21.	Salicional Vibrato	8'	61 Pipes
22.	Oboe	8'	73 Pipes
23.	Contra Trumpet)16'	73 Notes
24.	Trumpet) -97 Pipes	8'	73 Notes
25.	Trumpet Clarion)	4'	73 Notes
26.	Vox Humana	8'	73 Pipes
27.	Harp, Aeolian Concert	8'	61 Tones
28.	Celesta	4'	61 Tones (Playable on all Manuals, and with damper control)
29.	Chimes, Tubular			20 Tones (Playable on all Manuals and Pedals. With F & P control)
30.	Tremolo			

CHOIR ORGAN (Derived from Great)

31.	Diapason	8'	73 Notes
32.	Gross Flute	8'	73 Notes
33.	Concert Flute)	8'	73 Notes
34.	Flute) -85 Notes	4'	73 Notes
35.	Piccolo)	2'	61 Notes
36.	Gemshorn	8'	73 Notes
37.	Clarinet	8'	73 Notes
38.	Tuba (High Pressure)	8'	73 Notes
39.	Harp, Aeolian Concert	8'	61 Tones
40.	Celesta	4'	61 Tones (Playable on all Manuals, and with damper control)
41.	Chimes, Tubular			20 Tones (Playable on all Manuals and Pedals. With F & P Control)
42.	Tremolo			

March 15th, 1928.

PEDAL ORGAN

- 43. Sub Bass 16' 32 Pipes
- 44. Bourdon 16' 44 Pipes
- 45. Flute (from #44) 8' 32 Notes
- 46. Gedeckt (from #14) 16' 32 Notes
- 47. Flute Espanol (from #15)..... 8' 32 Notes
- 48. Contra Tuba (#8 Extended) ...16' 12 Pipes

COUPLERS

(Effective only as specified)

- 49. Great to Pedal 8
- 50. Great to Pedal 4
- 51. Swell to Pedal 8
- 52. Swell to Pedal 4
- 53. Choir to Pedal 8
- 54. Choir to Pedal 4
- 55. Great 16
- 56. Great Unison Release
- 57. Great 4
- 58. Swell 16
- 59. Swell Unison Release
- 60. Swell 4
- 61. Choir 16
- 62. Choir Unison Release
- 63. Choir 4
- 64. Swell to Great 16
- 65. Swell to Great 8
- 66. Swell to Great 4
- 67. Choir to Great 16
- 68. Choir to Great 8
- 69. Choir to Great 4
- 70. Swell to Choir 16
- 71. Swell to Choir 8
- 72. Swell to Choir 4

ADJUSTABLE COMBINATION PISTONS

(Adjustable at the Console and visibly affecting the Stop Tablets)
 (Single Manual Pistons with Double Touch, Second Touch acts on Pedal Combinations of corresponding Pedal Piston number.)

- 73. - 76. Four Great Pistons
- 77. - 81. Five Swell Pistons
- 82. - 85. Four Choir Pistons
- 86. - 88. Three Pedal Pistons
- 89. - 91. Three General Pistons (By Pistons and Pedal Plungers)
- 92. Combination Set Piston
- 93. All Off Piston - Visibly puts off all Stops, Couplers, Sforzando and Tonal.

ACCESSORIES

- 94. Sforzando Pedal. Reversible by Piston and Plunger) With
- 95. Crescendo Pedal (Tonal)) light
- 96. Choir and Great Expression) indicators
- 97. Swell Expression
- 98. Choir and Great Tremolo (two tablets)
- 99. Great to Pedal. Reversible by Piston and Plunger
- 100. Swell to Pedal. Reversible by Piston and Plunger
- 101. Choir to Pedal. Reversible by Piston and Plunger

THE DUO-ART PLAYER (Entirely Automatic)

- 102. By means of the Duo-Art Player, in conjunction with Aeolian Pipe Organ Duo-Art Records, the stops, tempo, expression, etc., are automatically operated.

THE SOLO PLAYER (Semi-Automatic)

- 103. By means of the Solo Player, in conjunction with Aeolian Pipe Organ Solo Music Rolls, the stops, tempo, expression, etc., are controlled by the performer. (Suggestive use of stops, tempo, expression, etc., is indicated on the Music Rolls.)

DUO-ART AND SOLO PLAYER CONTROLS

- 104. Tempo)
- 105. Reroll) Duo-Art and Solo Music
- 106. Ventil)
- 107. Reroll and Repeat Duo-Art Music (permitting the automatic continuous re-playing of Records)
- 108. Normal)
- 109. Reverse) Solo Music
- 110. Unison)

Items from No. 49 to end of this specification subject to revision to conform to Aeolian Pipe Organ Standard Console equipment, if improvements are adopted between signing of this Contract and construction of Organ.

111. Organ Motor Switch

112. Six Duo-Art Records (Standard selection of The Aeolian Company)

GENERAL DETAILS OF CONSTRUCTION

A - LOCATION:

Organ to be located in chambers prepared for it, on balcony of store.

B - CONSOLE:

Console containing three Manual and Pedal clavier, for manual playing and equipped with The Aeolian Company's Solo (semi-automatic) Music Roll mechanism and to be recessed in centre of Organ screen.

C - DUO-ART:

The Duo-Art mechanism will be incorporated in a separate Duo-Art Cabinet making the Organ playable with the Duo-Art Records and located on balcony near Organ.

D - CASEWORK:

No Organ screen or casework considered. However, Console Case and Organist's seat and Duo-Art Cabinet of standard design and of native hardwood, is included in this specification; sample of finish to be supplied by purchaser.

E - BLOWING APPARATUS:

Blowing apparatus including an efficient electric motor wired to suit local electric conditions and a generator to furnish low voltage for the Organ mechanism, to be furnished by Organ builders and located in a room adjacent to the Organ Chamber.

F - PURCHASER AGREES:

Purchaser agrees to make necessary preparation for Organ in accordance with information to be furnished by Organ builders; and to install the necessary galvanized iron windtrunking under direction of Organ builders, from blowing apparatus to Organ and Console and to bear all expense of wiring, conduiting, and switches for electric current, also to provide wiring and lights for the Organ chambers, motor room, Console and Duo-Art Cabinet.

C O N T R A C T

The undersigned, THE AEOLIAN COMPANY, hereby agrees to build and deliver F.O.B. cars, Garwood, New Jersey, an Aeolian Pipe Organ, in accordance with the foregoing specification and General Details of Construction (which are hereby made a part of this contract) of the highest attainable standard of quality in both workmanship and materials throughout, to ship the Organ on or about July 10th and to install in the store of S. H. Kress and Company, New Orleans, Louisiana, on or about Sept. 10th, unless delayed by fire, water, strikes, or other causes beyond its control, for and in consideration of the sum of Twenty Five Thousand, Nine Hundred (\$25,900.) Dollars, payable in New York exchange as follows:

Two Thousand, Five Hundred Ninety Dollars.....(\$2,590.)
upon signing of this contract;

Eleven Thousand, Six Hundred Fifty Five Dollars.....(\$11,655.)
when Organ is ready for shipment from Garwood, N. J.;

Eleven Thousand, Six Hundred Fifty Five Dollars.....(\$11,655.)
when Organ is installed in above residence;

it being understood that in the event of delay in shipment or installation caused by purchaser for any reason whatever, the purchaser agrees to pay any necessary charges for storage or incidentals pertaining thereto; to make second payment when the Organ is ready for shipment, and within sixty days after the said approximate shipping date to pay the entire balance of said purchase price less an amount of fifteen (15%) percent of the total price, which amount shall be withheld until installation of the Organ.

It is further understood and agreed that said Organ is at the risk of said purchaser, on and after its arrival on purchaser's premises, against damage by fire, water, or any other cause not due to negligence or fault of The Aeolian Company or its employees, and the title to said Organ shall remain in The Aeolian Company until said Organ is fully paid for as hereinbefore provided.

The foregoing contract covers all agreements and conditions between the parties thereto, and becomes valid when accepted by both the purchaser and a duly authorized executive of The Aeolian Company.

J. W. Crookes
For THE AEOLIAN COMPANY

ACCEPTED BY:

S. H. Kress & Co. by C. T. Green
This 23rd day of March, 1928.

THE AEOLIAN COMPANY

Approved by Robert T. Tapp

This 26 day of March, 1928.

NAME OF STOP	QUAN	PRICE EACH	TOTAL	NAME OF STOP	QUAN	PRICE EACH	TOTAL
GREAT ORGAN				TOTAL BROUGHT FORD. (GOL. 1)			
5' Diapasons				SOLO ORGAN			
8' Diapasons			590 00	(Stop Costs include High)			
8' Strings				(Pressure Charge.)			
5' Bourdon				8' Diapason or Stentorphone			
8' Flute F			550 00	8' Strings			
8' Flute P (Dolce)				8' Flute			
Concert Flute or Melodia	1-4	1-21	580 00	4' Flute or Octave			
Octave (Principal)				16' Tuba or Trumpet			
Flute (Harm. or Wald)				8' Tuba or Trumpet			61
2/3' and Smaller Stops.				8' Tuba Mirabilis			
8' Tuba or Trumpet				8' Corno di Bassetto			
8' Tuba or Trumpet				8' French Horn			
Clarion (Trumpet)				8' English Horn			
French Horn				8' Musette			
Clarinet			495 00	4' Clarion or Trumpet			
Mixture (5 Ranks)				PEDAL ORGAN 16' Sub Bass			775
8 Gemshorn			490 00	32' Diapason (12 Pipes)			
SWELL ORGAN				16' Diapason (32 Pipes)			
8' Bourdon				8' Octave (12 Pipes)			
8' Diapasons			590 00	32' Bourdon (12 Pipes)			
8' Strings				16' Bourdon (32 Pipes)			675
8' Strings	4	490 00	1960 00	8' Flute (12 Pipes)			235
Gedeckt (St. Diap.)				32' Violone (12 Pipes)			
Fl. P or Sp. Flute)				16' Violone (32 Pipes)			
Dolce Flute				8' Cello (12 Pipes)			
Flute (Harmonic)				16' Bassoon (32 Pipes)			
8' Strings				32' Bombarde (12 Pipes)			
2/3' and Smaller				16' Trombone (32 Pipes)			
Mixture (5 Rks.) (275 Pipes)				8' Tromba (12 Pipes)			
Ice Cornet (3 Rks.) (183 Pipes)				32' Resultant or 10 2/3 Quint.			
Posaune or Trumpet			1005 00	EXTENDED STOPS			
Fagotto or Bassoon				Unit Bourdon or Spanish			1125
Cornopean or Trumpet				Flute extended to form			
Standard Oboe				Bourdon 16', Flute 8', Flute 4',			
Oboe (Aeolian)			550 00	Flute 2', on one Manual;			
Vox Humana			565 00	also Pedal Stop 16' and 8'			
Clarion (Trumpet)				Unit Trumpet on one Manual			
				16'-8'-4' and available on			
CHOIR ORGAN				Pedal 16' (Low pressure Wind)			
8' Strings				Unit Tuba, as above.			
8' Diapasons				(High Pressure Wind)			
8' Strings				16' Manual Stops ext. to form 8' 4'			165
Concert Flute or Melodia				8' Manual Stops ext. upward.			
Quintadena				8' Manual Stops ext. to 16' for Ped.			
Flute D'Amour				Compounding Stops			80
8' Strings				Manual Stops borrowed to Ped.			
2/3' and Smaller				For any of the above			
Clarinet (FR)				also borrowed to Ped.			
English Horn				at higher pitches.			385
ECHO ORGAN				Extra charge for Stops not			
8' Diapasons				in Solo Organ on 8" Wind			
Dolce Flute				or over			
Gedeckt				SUB TOTAL			11430
8' Strings							
Flute				DEDUCTIONS			
Vox Humana				For Flute Vibratos, Dulciana			
Mixture				Vibratos and Aeoline String			75
Quintadena				P Vibratos deduct for each			
				from scheduled price.			
X HUMANA CHOIR				(Lowest Octave of pipes)			
				(is always omitted.)			
TOTAL COLUMN 1				TOTAL STOP COST "A"			11355
				(FILL IN ON RECAP. ITEM "A")			

CONSOLE 2 Manual *				
2 Manual Std. Case if required.				
CONSOLE 3 Manual *			29	10
3 Manual Std. Case if required.			8	85
CONSOLE 4 Manual *				
4 Manual Std. Case if required.				
* Includes: - Action (less Player), Std. Couplers & Std. Mechanicals.				
CASE DRAFTING AND HARDWARE If Case by others				
DUO-ART ACTION In Console XXXX 116 Note only			5	00
DUO-ART ACTION In separate Cabinet			14	05
DUO-ART CABINET If required. Standard Design.			4	20
FIXED COMBINATIONS (3 and Release) per Manual				
ADJUSTABLE COMBINATIONS: - 25 Stop Tablets or less per Tablet			14	85
35 " " " " " "				
Over 35 Stop Tablets " "				
<div> <div>Do not include Couplers, Releases, or Tremolos in Tablet count for figuring above. Figure Compound Stops as two Tablets. Harp and Celesta two in each Manual. Chimes or Piano as one in each Manual.</div> <div>Include prepared for Stops.</div> </div>				
PREPARATION IN CONSOLE per Stop.				
If Compound " "				
(Preparation includes Tablets, space in layout and Blower, except for high pressure Stops.)				
PREPARATION FOR HARP AND CELESTA per Manual.				
PREPARATION FOR CHIMES per Manual & Pedal.				
PREPARATION FOR PIANO " " " "				
(Preparation includes Tablets, Switch, and space in layout.)				
HARP AND CELESTA with and without dampers plus 3 per Manual.			14	10
CHIMES 20 Notes " " "			5	40
PIANO CONNECTION " " "				
BLOWER & GENERATOR Up to 12 ranks of Pipes				
" " 17 " " "			9	35
" " 30 " " "				
" " 50 " " "				
(Include prepared for Stops.)				
EXTRA CHARGE WHEN ORGAN CHAMBER PROHIBITS SWELL BOXES OF 8'-9" IN LENGTH per speaking Stop.				
CASE WORK AND DISPLAY PIPES, per factory estimate, if required.				
EXTRA FOR TWO SWELL BOXES IN MAIN ORGAN OF 2 MANUAL.				
BASE CHARGE FOR ECHO ORGAN, if Echo is included or prepared for in Console. (No base charge for Vibrato and Antiphonal Organs.)				
BASE CHARGE FOR SOLO, if less than 4 Manual.				
TOTAL "B"			104	90
RECAPITULATION				
TOTAL STOP COST "A" (From Sheet "A")			113	55
TOTAL MECHANICAL COST "B" (From above "B")			104	90
SUB TOTAL (ADD "A" & "B") "C"			218	45
Installation 15% of total "C"			32	87
Extra for installation at resort points during season or in Florida 5% of Total "C"				
Transportation when included.				
Commissions				
Canadian Custom Duties per speaking Stop.				
Music Rolls (Minimum 6 Standard Rolls with every Organ) Min. Charge			4	3
TOTAL SELLING PRICE			251	75
			259	00
J. W. Crooks				



ORGAN NUMBER

1678

THE AEOLIAN COMPANY

NEW YORK

ADDITIONS TO THE
AEOLIAN PIPE-ORGAN

FOR

The Store of

S. H. Kress and Company,

New Orleans, Louisiana.

Antiphonal Organ



Entered E. S. F.

Copy to Factory 4/27/28.

The Aeolian Company

PIPE-ORGAN DEPARTMENT

Aeolian Hall New York

Frank Taft Managing Director

Builders of

Aeolian Pipe-Organs

for

Residences

1678

LONDON PARIS

WORKS AEOLIAN NEW JERSEY

April 16th, 1928.

Additions to the Aeolian Pipe-Organ in the residence of S. H. Kress and Company, New Orleans, Louisiana.

ANTIPHONAL ORGAN

(Playable from Great)

1.	Diapason	8'	73 Pipes
2.	String F	8'	73 Pipes
3.	String P	8'	73 Pipes
4.	Flute	8'	73 Pipes
5.	Flute (high)	4'	73 Pipes
6.	Oboe	8'	73 Pipes
7.	Vox Humana	8'	73 Pipes
8.	Tremolo			

ANTIPHONAL ORGAN

(Playable from Swell)

9.	Diapason	8'	73 Notes
10.	String F	8'	73 Notes
11.	String P	8'	73 Notes
12.	Flute	8'	73 Notes
13.	Flute (high)	4'	73 Notes
14.	Oboe	8'	73 Notes
15.	Vox Humana	8'	73 Notes

29.

PEDAL ORGAN

16. Flute (deep) 16' 32 Pipes

ACCESSORIES

17. Expression Pedal
18. Main Organ Only
19. Antiphonal Only
20. Both Organs

An efficient motor and blower furnished and installed by the Organ builder.

Purchaser agrees to prepare chamber for the Antiphonal Organ, motor and blower room, conduits and windtrunk, and install high tension motor starting wires from main to motor and Console. Organ builder agrees to install the low tension Organ action current wires.

The Antiphonal Organ is playable independently or together with the Main Organ by hand playing or Duo-Art and 116-note Music Rolls.

A

STOP
COSTSSELLING PRICE
ORGAN FOR *S.H. Kruel & Co.*
LOCATION *New Orleans La.*DATE *4-25-21*

AEOLIAN CO. ORGAN

NAME OF STOP	QUAN	PRICE EACH	TOTAL	NAME OF STOP	QUAN	PRICE EACH
GREAT ORGAN				TOTAL BROUGHT FORD. (COL. 1)		
16' Diapasons				SOLO ORGAN		
8' Diapasons	1	590		(Stop Costs include High)		
8' Strings	2	980		(Pressure Charge.)		
16' Bourdon				8' Diapason or Stenforphore		
8' Flute F				8' Strings		
8' Flute P (Dolce)				8' Flute		
8' Concert Flute or Melodia				4' Flute or Octave		
4' Octave (Principal)				16' Tuba or Trumpet		
4' Flute (Harm. or Wald)				8' Tuba or Trumpet		
2 ² / ₃ ' and Smaller Stops.				8' Tuba Mirabilis		
16' Tuba or Trumpet				8' Corno di Bassetto		
8' Tuba or Trumpet				8' French Horn		
4' Clarion (Trumpet)				8' English Horn		
8' French Horn				8' Musette		
8' Clarinet				4' Clarion or Trumpet		
Mixture (5 Ranks)				PEDAL ORGAN		
				32' Diapason (12 Pipes)		
SWELL ORGAN				16' Diapason (32 Pipes)		
16' Bourdon				8' Octave (12 Pipes)		
8' Diapasons				32' Bourdon (12 Pipes)		
16' Strings				16' Bourdon (32 Pipes)	1	685
8' Strings				8' Flute (12 Pipes)		
8' Gedeckt (St. Diap.) }	1	515		32' Violone (12 Pipes)		
(Fl. P or Sp. Flute) }				16' Violone (32 Pipes)		
8' Dolce Flute				8' Cello (12 Pipes)		
4' Flute (Harmonic)	1	425		16' Bassoon (32 Pipes)		
4' Strings				32' Bombarde (12 Pipes)		
2 ² / ₃ ' and Smaller				16' Trombone (32 Pipes)		
Mixture (5 Rks.) (275 Pipes)				8' Tromba (12 Pipes)		
Dolce Cornet (3 Rks.) (183 Pipes)				32' Resultant or 10 ² / ₃ Quint.		
16' Posaune or Trumpet				EXTENDED STOPS		
16' Fagotto or Bassoon				Unit Bourdon or Spanish		
8' Cornopean or Trumpet				Flute extended to form		
8' Standard Oboe	1	550		Bourdon 16', Flute 8', Flute 4' }		
8' Oboe (Aeolian)				Flute 2', on one Manual ;		
8' Vox Humana	1	565		also Pedal Stop 16' and 8' }		
4' Clarion (Trumpet)				Unit Trumpet on one Manual }		
				16'-8'-4' and available on }		
CHOIR ORGAN				Pedal 16' (Low pressure Wind)		
16' Strings				Unit Tuba, as above. }		
8' Diapasons				(High Pressure Wind) }		
8' Strings				16' Manual Stops ext. to form 8' }		
8' Concert Flute or Melodia				8' Manual Stops ext. upward.		
8' Quintadena				8' Manual Stops ext. to 16' for Ped.		
4' Flute D'Amour				Compounding Stops	7	70
4' Strings				Manual Stops borrowed to Ped.		
2 ² / ₃ ' and Smaller				For any of the above }		
8' Clarinet (FR)				also borrowed to Ped. }		
8' English Horn				at higher pitches. }		
ECHO ORGAN				Extra charge for Stops not		
8' Diapasons				in Solo Organ on 8" Wind }		
8' Dolce Flute				or over		
8' Gedeckt				SUB TOTAL		
8' Strings						
4' Flute				DEDUCTIONS		
8' Vox Humana				For Flute Vibratos, Dulciana		
8' Mixture				Vibratos and Aeoline String		
8' Quintadena				P Vibratos deduct for each		
				from scheduled price.		
VOX HUMANA CHOIR				(Lowest Octave of pipes)		
				(is always omitted.)		
TOTAL COLUMN 1				TOTAL STOP COST "A"		
				(FILL IN ON RECAP. ITEM "A")		

CONSOLE 2 Manual *		
2 Manual Std. Case if required.		
CONSOLE 3 Manual *		
3 Manual Std. Case if required.		
CONSOLE 4 Manual *		
4 Manual Std. Case if required.		
* Includes: - Action (less Player), Std. Couplers & Std. Mechanicals.		
CASE DRAFTING AND HARDWARE If Case by others		
DUO-ART ACTION. In Console with 116 Note		
In separate Cabinet		
DUO-ART CABINET If required. Standard Design.		
FIXED COMBINATIONS (3 and Release)	per Manual	
ADJUSTABLE COMBINATIONS: - 25 Stop Tablets or less	per Tablet	
35 " " " "	" "	
Over 35 Stop Tablets	" "	
Do not include Couplers, Releases, or Tremolos in Tablet count for figuring above. Figure Compound Stops as two Tablets. Harp and Celesta two in each Manual. Chimes or Piano as one in each Manual. Include prepared for Stops.		
REPARATION IN CONSOLE	per Stop.	
If Compound " "		
Preparation includes Tablets, space in layout and Blower, except) or high pressure Stops.		
REPARATION FOR HARP AND CELESTA	per Manual.	
REPARATION FOR CHIMES	per Manual & Pedal.	
REPARATION FOR PIANO	" " " "	
(Preparation includes Tablets, Switch, and space in layout.)		
HARP AND CELESTA with and without dampers	plus per Manual.	
CHIMES 20 Notes	" " "	
PIANO CONNECTION	" " "	
BLOWER & GENERATOR Up to 12 ranks of Pipes		4 85
" " 17 " " "		
" " 30 " " "		
" " 50 " " "		
(Include prepared for Stops.)		
EXTRA CHARGE WHEN ORGAN CHAMBER PROHIBITS SWELL BOXES OF 8'-9" IN LENGTH	per speaking Stop.	
CASE WORK AND DISPLAY PIPES, per factory estimate, if required.		
EXTRA FOR TWO SWELL BOXES IN MAIN ORGAN OF 2 MANUAL.		
CASE CHARGE FOR ECHO ORGAN, if Echo is included or prepared or in Console. (No base charge for Vibrato and Antiphonal Organs.)		
CASE CHARGE FOR SOLO, if less than 4 Manual.		
TOTAL "B"		4 85
RECAPITULATION		
TOTAL STOP COST "A" (From Sheet "A")		43 80
TOTAL MECHANICAL COST "B" (From above "B")		4 85
SUB TOTAL (ADD "A" & "B") "C"		48 65
Installation 15% of total "C"		7 28
Extra for installation at resort points during season or in Florida 5% of Total "C"		
Transportation when included.		
Commissions		
Canadian Custom Duties per speaking Stop.		
Music Rolls (Minimum 6 Standard Rolls with every Organ) Min. Charge		
6175- <u>Spokane</u> TOTAL SELLING PRICE		55 83
5583 Sold at <u>6175</u>		61 75

4/16/28

C O N T R A C T

In conjunction with Organ Specification dated and signed March 23rd and approved March 26th, 1928, the undersigned, THE AEOLIAN COMPANY, hereby agrees to build and deliver F.O.B. cars, Garwood, New Jersey, an Antiphonal Organ, in accordance with the foregoing specification and General Details of Construction (which are hereby made a part of this contract) of the highest attainable standard of quality in both workmanship and materials throughout, to ship the Antiphonal Organ on or about July 10th, 1928, and to install in the store of S. H. Kress and Company, New Orleans, Louisiana, on or about September 1st, 1928, unless delayed by fire, water, strikes, or other causes beyond its control, for and in consideration of the sum of Six Thousand, One Hundred Seventy Five (\$6,175.00) Dollars, payable in New York exchange as follows:

Six Hundred Seventeen Dollars and Fifty Cents (\$617.50)
upon signing of this contract;

Two Thousand Seven Hundred Seventy Eight Dollars and Seventy Five Cents (\$2778.75)
when Organ is ready for shipment from Garwood, N. J.;

Two Thousand Seven Hundred Seventy Eight Dollars and Seventy Five Cents (\$2778.75)
when Organ is installed in above residence;

it being understood that in the event of delay in shipment or installation caused by purchaser for any reason whatever, the purchaser agrees to pay any necessary charges for storage or incidentals pertaining thereto; to make second payment when the Antiphonal Organ is ready for shipment, and within sixty days after the said approximate shipping date to pay the entire balance of said purchase price less an amount of fifteen (15%) percent of the total price, which amount shall be withheld until installation of the Antiphonal Organ.

It is further understood and agreed that said Antiphonal Organ is at the risk of said purchaser, on and after its arrival on purchaser's premises, against damage by fire, water, or any other cause not due to negligence or fault of The Aeolian Company or its employees, and the title to said Antiphonal Organ shall remain in The Aeolian Company until said Antiphonal Organ is fully paid for as hereinbefore provided.

The foregoing contract covers all agreements and conditions between the parties thereto, and becomes valid when accepted by both the purchaser and a duly authorized executive of The Aeolian Company.

ACCEPTED BY

This 25th day of April 1928.

THE AEOLIAN COMPANY

Approved by

This 25th day of April 1928.
For THE AEOLIAN COMPANY

(The price noted on attached specification is guaranteed for only 90 days from date.)